

Pedestrian Environment: Place Making

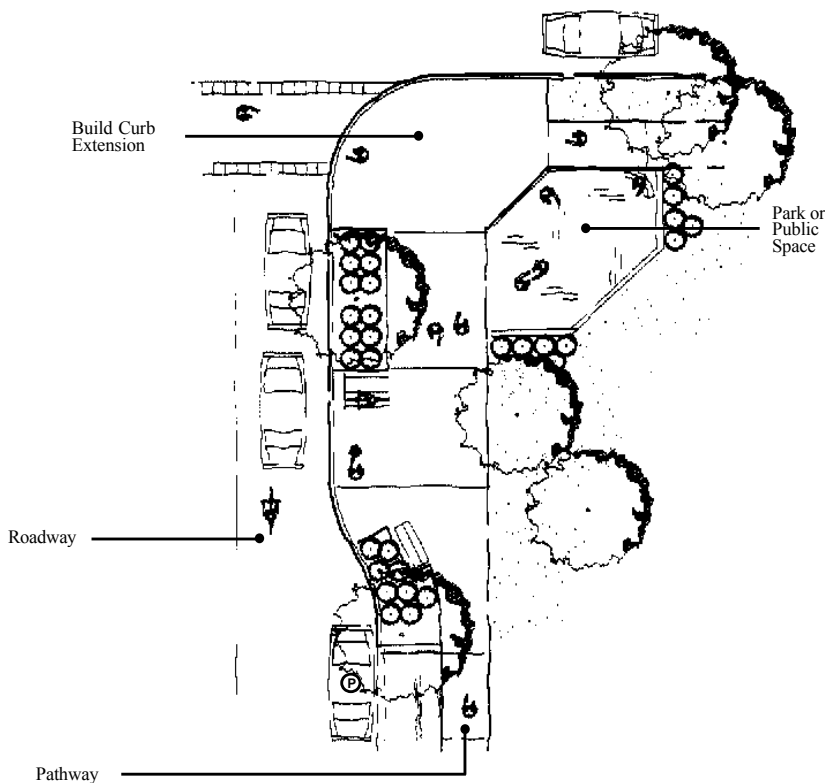
TOOL 18 – Corner Public Spaces

Design Issues

Reconstructing the street corners on uncurbed streets is also an opportunity to introduce curb extensions (“bulb-outs”) into the streetscape. In addition to pedestrian crossing and traffic calming benefits, expanded street corners, provide space for place-making elements such as landscaping, benches, bicycle racks and improved lighting. In some locations, street corner amenities can be associated with small neighborhood play areas or plazas as a useable public landscape within the neighborhood.

Guideline

Corner curb extension on an uncurbed street.



NTM Considerations

- Street corner public spaces are also appropriate for standard streets.
- Play areas or plaza should be small, not more than 50' to 60' in diameter.