



## III. Recommended Improvements

This section provides a detailed review of the recommended improvements to be made to the Vancouver Trail System:

- Creating a Trail Network
- Recommended Projects
- System-wide Map
- Project Sheets and Maps
- Prominent Features to Include in Plan

### Creating a Trail Network

The recommendations in this section are based on a careful assessment of the existing system, input from the community, and consultants' expertise. They rely on results from a widely-distributed survey and input from public workshops and other outreach avenues held for the Transportation System Plan throughout 2000 and 2002. City and County staff from the engineering, planning, parks, and other departments provided specialized expertise as needed.

The consultant team also considered certain technical criteria to select the most feasible projects:

- Connectivity
- Travel volumes and speeds
- Amount of side friction (driveways, side streets)
- Corridor width
- Access from residential areas
- Number of destinations served (schools, employment centers, historic sites, transit stations, parks, etc.)
- Topography
- Integration into the regional system
- Adjacent land use
- On-street parking
- Safety concerns
- Intersection treatments
- Existing opportunities such as planned trail or roadway improvements

## Recommended Projects

Vancouver's Discovery Trail Network falls into five main projects, with each composed of many segments. These recommended projects are broken down into segments in Table III-1. Additionally, each recommended project is reviewed in detail on an individual Project Sheet. The Project Sheets are designed to be used as a direct resource for the development of funding applications. Each provides key information on the proposal, including location, route, description, and photographs. These projects are:

1. Burnt Bridge Creek Trail, from Stewart's Glen at Fruit Valley Road all the way east to the City limits and connecting to the Lacamas Lake Trail.
2. Columbia Waterfront/Evergreen Highway, composed of various segments from the Amtrak station east to the City limits.
3. Discovery Trail Loop, including a section of the Columbia Waterfront and looping around Ft. Vancouver.
4. Vancouver Lake Loop, from downtown west along Lower River Road and including Frenchman's Bar, a Vancouver Lake Lowlands segment, and a connection north to the Salmon Creek Greenway in Clark County.
5. Other Trails:
  - Powerline Trail, NE 18th Street
  - NE 192nd Avenue
  - Blandford Drive
  - Ellen Davis Trail
  - Firstenburg Community Center Trail Connection

Many different trail designs and treatments are possible in Vancouver. Trail design standards are provided in Section II, Design Guidelines, covering such aspects of trail infrastructure as pathways, crossings, amenities and signage. Figure II-4 through Figure II-7 show typical designs for some of the trail treatment opportunities in the Vancouver system, such as powerline trails, walking trails, roadside trails, waterside trails and rails-with-trails. Intersection treatments are discussed and sample intersection treatments provided in Figure II-8 through Figure II-11, a prototype trailhead design is shown in Figure II-12, and a sample educational / interpretive kiosk is provided in Figure II-13.

Table III-1: Vancouver Trail Network Recommended Projects

Project	Location Description	Status
<b>1. BURNT BRIDGE CREEK GREENWAY</b>		
A. Stewart's Glen	Along Burnt Bridge Creek from Fruit Valley Rd to Hazel Dell Rd	Planned and funded; Interagency Committee for Outdoor Recreation (IAC) grant procured in 2003 for upgrades to existing path.
B. Leverich Park	Proposed shared use path from I-5 crossing to Leverich Park. Existing trail from Leverich Way to Nicholson Rd along Burnt Bridge Creek needs improvements, New crossings proposed at I-5 and St. Johns.	Proposed
C. Falk Road	Planned shared use path from Nicholson Rd to existing crossing at Fourth Plain Blvd, also provide connection to Jim Parsley Community Center	Planned and funded
D. Lettuce Fields	Planned shared use path from E Devine Rd to Burton Rd along Burnt Bridge Creek	Planned and funded
E. Beaver Marsh	Proposed shared use path and on street bike lanes from NE Burton Rd to the Beaver Marsh Nature Reserve	Proposed
F. Kevanna Park	Proposed walking path from Kevanna Park to NE Goodwin Rd at Lacamas Lake along Burnt Bridge Creek	Proposed
<b>2. COLUMBIA RIVER / EVERGREEN HIGHWAY</b>		
A. Kaiser Shipyard	Proposed shared use path from Ryan's Point/Marine Park along river to Columbia Shore	Proposed
B. Ryan's Point (Marine Park)	Proposed shared use path from NW portion of Marine Park to east end of Columbia Way	Proposed
C. Lieser Point	Proposed shared use path and proposed improvements to existing path from Lieser Point Drive at Wintler Park to Image Rd. through Jane Weber Arboretum	Proposed
D. Tidewater Cove	Proposed shared use path to extend out to viewing area	Proposed
E. Ellsworth	Planned shared use path from Image Rd. through Jane Weber Arboretum to Ellsworth on Evergreen Highway	Design in progress, seeking funding for construction
F. Columbia Springs	Proposed shared use path from I-205 to SE 192nd Ave; includes Rivershore Walking Trail	Proposed
<b>3. DISCOVERY LOOP / CENTRAL CITY</b>		
A. Discovery Trail Loop	Evergreen Blvd to E. Reserve, to E 5th St through Keiwi, under SR 14 to Central River Reach to Old Apple Tree Park to E 5th St	Completed in 2003, trail amenities proposed
B. SR 14 Landbridge	Planned connection from Discovery Loop and National Park Service's Fort Vancouver to Apple Tree Park and Waterfront	Design completed, seeking funding for construction
C. Amtrak	Short Term: 8th to Amtrak Long Term: Along River to 8th	Proposed

Project	Location Description	Status
<b>4. VANCOUVER LAKE LOOP</b>		
A. Lower River Rd	Proposed shared use path from Fourth Plain Blvd to Flushing Channel along River Rd.	Proposed
B. Lake River	Proposed shared use path from Stewart's Glen to Ridgefield National Wildlife Refuge with Lake River Bridge	Proposed/See Regional Plan
C. Fruit Valley Rd	Proposed on-street bikeway and extended sidewalks from NW Whitney to Lakeshore Ave. along Fruit Valley Rd.	Proposed
D. Lowlands Loop	Proposed shared use path from Lower River Rd to Fruit Valley Rd, inside Vancouver Lake Lowlands	Proposed
SPUR: Lakeshore Rd	Proposed on-street bikeway and off-street shared use path from Fruit Valley Rd to Salmon Creek Greenway along Lakeshore Rd.	Proposed
SPUR: La Frambois Rd	Proposed shared use path from Fruit Valley Rd through Vancouver Lake Lowlands to Fourth Plain	Proposed
<b>5. OTHER TRAILS</b>		
A. Powerline: NE 18th St	Proposed shared use path From Meadowbrook Park east to NE Goodwin Rd./Lacamas Lake along NE 18th St corridor	Proposed, portion completed in 2003
B. NE 192nd Ave.	Proposed on-street bikeway and shared use path from NE 18th St to Evergreen Hwy along 192 <sup>nd</sup>	Under Construction
C. Blandford	Proposed shared use path from Marine Park to Burnt Bridge Creek Trail along Devine, MacArthur, Blandford, and Columbia House Dr.	Proposed
D. Ellen Davis Trail	Existing earthen walking trail east of Vancouver Lake from Lakeshore Rd to St. Johns; connects to Burnt Bridge Creek Trail	Proposed upgrades
E. Firstenburg Community Center Trail Connection	Connect Community Center to Haagen Park and on to 18th Street Powerline Trail	Planning and design in progress

### *Paths and Trails System Map*

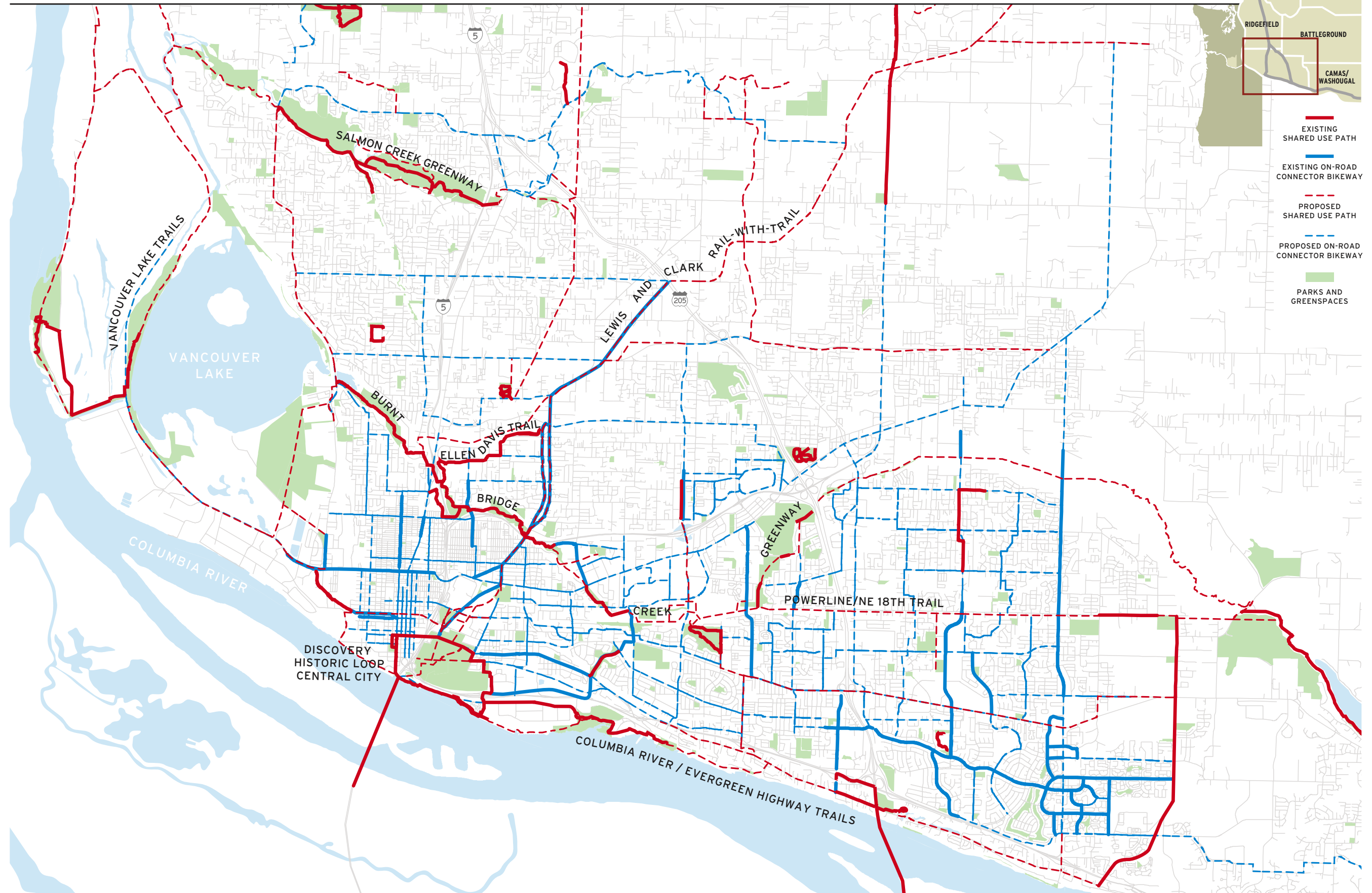
The full Paths and Trails System map is presented on the following page as Figure III-1. This map is to scale; please refer to it for all distance measurements throughout this section.

Next page:

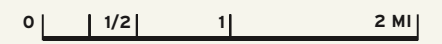
**Figure III-1. Vancouver Paths and Trails System Map**

# Vancouver Paths and Trails Master Plan

VANCOUVER, WASHINGTON



VANCOUVER-CLARK PARKS & RECREATION DEPARTMENT  
[www.vanclarkparks-rec.org/](http://www.vanclarkparks-rec.org/)





## PROJECT 1: Burnt Bridge Creek Greenway

The Burnt Bridge Creek Greenway spans the City of Vancouver from Stewart's Glen in the west to Lacamas Lake in the east totaling 166 acres. While there are close to 5 miles of existing shared use paths within the Burnt Bridge Creek Greenway the ultimate goal of the project is to create a continuous shared use path system that spans the entire greenway. In order to achieve this goal, an additional 6 miles of shared use paths are proposed that are outlined in the following segments. Additionally, existing trails are in need of improvements including upgrades and the inclusion of amenities such as benches and signage to truly take advantage of the "Green Jewel" that runs through the heart of Vancouver. Figure III-2 provides an overview of the entire project illustrating each section. The numbering sequence of the segments in this section runs from west to east. Each segment is described in further detail on its own Project Sheet.

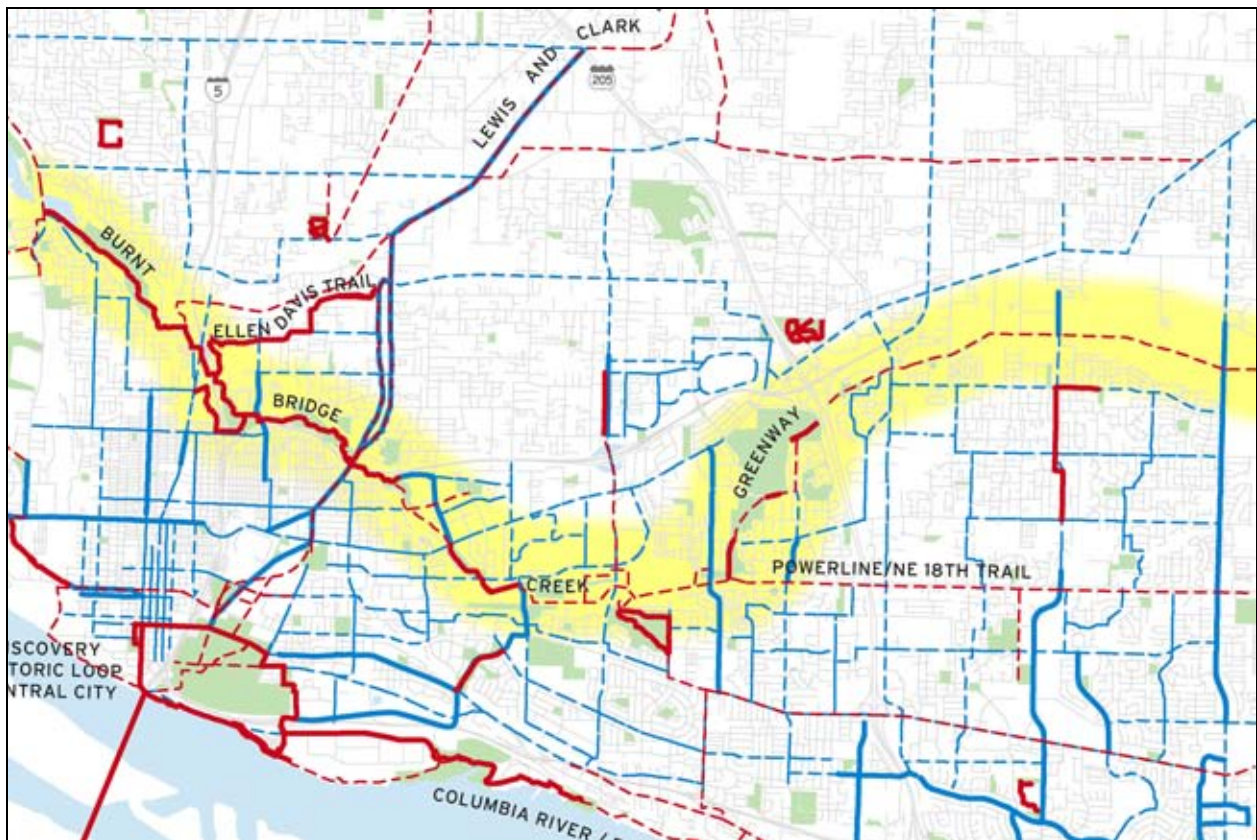


Figure III-2: Project 1, Burnt Bridge Creek Greenway

**Segment 1A: Stewart's Glen**

**~ 1.75 miles**

**Improvement Type**

Widen and improve existing trail

**Route**

Existing path from Fruit Valley Rd. to Hazel Dell Rd along Burnt Bridge Creek. Includes overcrossing at I-5 and Kiggins Bowl Trail.

**Description**

This project upgrades the existing popular Burnt Bridge Creek Trail, a lovely stretch with views of the Creek, vegetation and wildlife. The Pavement is cracking in many places; some areas should be widened to 12' wide. Improvements will also include the provision of amenities such as benches, and directional and interpretive signage.

This existing trail is 10 – 12' wide and is located along Burnt Bridge Creek.



This segment also includes a trail along the east perimeter of the Kiggins Bowl - one of Vancouver's premier outdoor stadiums. The Kiggins Bowl trail connects Main St. at 45<sup>th</sup> St. to 39<sup>th</sup> St., leading to the 39<sup>th</sup> St. access into Leverich Park and the Burnt Bridge Creek Trail. Users can also access the trail system to the north or the I-5 overpass via go the sidewalk on Main St.

**Typical Treatment**

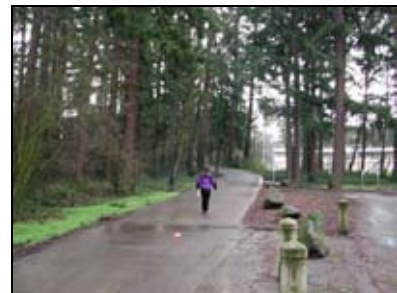
Shared-use path: Waterside design



*Stewart's Glen*



*Stewart's Glen*



*Kiggins Bowl*

**Segment 1B: Leverich Park** **~ 2.0 miles**

**Improvement Type**

New connector path, widen and improve existing path, enhance crossings

**Route**

Existing path from Leverich Way to Nicholson Rd. through Leverich Park, proposed path to connect I-5 overpass to Leverich Park.

**Description**

This project would provide bike lanes on Leverich Way to connect users from the I-5 Overpass to Leverich Park, where an existing trail segment begins. A combined trail/sidewalk should also be built on the east side of the road to serve walkers, joggers, people with disabilities, and families with small children.

In Leverich Park, the trail pavement should be upgraded and Discovery Trail signage added.

**Typical Treatment**

Shared-use path: Waterside design

**Treatments and Improvements**

Currently the crossing at NE 15<sup>th</sup> Ave. is a typical marked connected crosswalk. Because of the speed and volume on this road and its use as an access road to I-5, an undercrossing is recommended.

**Connections**

The crossing of St. John’s Blvd is currently facilitated by a signalized crosswalk. This will be redesigned as an undercrossing during an upcoming interchange project. Directional signage is needed.



*Nicholson Ave.*

Crossing	Recommended Treatment
NE 15 <sup>th</sup> Ave	undercrossing
St. Johns Blvd	signal or undercrossing

**Segment 1C: Falk Road Greenway**

~2.0 miles

**Improvement Type**

New shared-use path

**Route**

From Nicholson Rd. to existing crossing at Fourth Plain Blvd. through Brookside Park. Also provide connection to Jim Parsley Community Center through Vancouver School District Property.

**Description**

Vancouver has received \$1.2 million in grant funding to develop this trail segment through Brookside Park, alongside the Glen Properties and connecting to an existing crossing signal at Fourth Plain. South of Fourth Plain, the existing trail works well and includes a trailhead at Meadow Homes Park and a marked crossing at E 18<sup>th</sup> Street.

The Glen Properties Section presently has a non-standard 6' sidewalk that will need to be replaced with a 12' trail to meet AASHTO standards. Further east, a new section must be built along a powerline behind the homes, and connecting to Fourth Plain Blvd.

**Typical Treatment**

Shared-use path: Waterside and Powerline trails

**Treatments and Improvements**

Recommended upgrades to Meadow Homes Park are restrooms, benches, signage and security lights. Recommended evaluation of potential signal timing and visibility improvements to Fourth Plain intersection in response to three crashes at Falk Road where people have been hit crossing Falk Road by motorists making left turns onto Fourth Plain.



*Fourth Plain Blvd. to Devine Rd.*



*Crossing 18th St.*



*18th St. to Devine Rd.*

Crossing	Recommended Treatment
Fourth Plain	use existing signal, with timing and visibility improvements

**Segment 1D: Lettuce Fields** **~ 1.3 miles**

**Improvement Type**

New shared use path

**Route**

E Devine Rd. to Burton Rd.

**Description**

The proposed trail in this section will follow along Burnt Bridge Creek and the Bonneville Power Administration (BPA) powerline, and will end at Meadowbrook Park where user facilities are planned. The powerline corridor offers more than adequate space for a 12' trail. This project should be coordinated with the 18<sup>th</sup> St. design and construction project beginning in 2002. The BPA has indicated their conceptual support for trail improvements on their right-of-way.

East of Andresen, the trail alignment crosses NE 86<sup>th</sup> Ave, then goes through City property to connect to and across NE Burton Rd.



*Lettuce Fields Trail*

**Typical Treatment**

Shared-use path: Waterside and Powerline Trails

Crossing	Recommended Treatment
E Devine Rd	Crosswalk
NE 65 <sup>th</sup> Ave	Crosswalk
NE Andresen	Signal, undercrossing or overcrossing
NE 86 <sup>th</sup> Ave	Crosswalk (exists)



*West approach to Andresen*



*Trail east of Andresen*

**Segment 1E: Beaver Marsh**

~ 1.2 miles

**Improvement Type**

New shared-use path and on street bike lane

**Route**

NE Burton Rd. to the Beaver Marsh Nature Preserve.

**Description**

This trail section will connect Meadowbrook Park and Beaver Marsh Nature Preserve. Crossing I-205 is not considered an option at this time. Trail users wishing to continue east will be able to take bike lanes on NE Burton Rd to cross underneath I-205.

This segment contains a nice loop at Beaver marsh, where an existing path can be used for a wonderful nature experience.

**Typical Treatment**

Shared-use path: Waterside design



*Beaver Marsh*



*Burton Rd. underpass at I-205*

Crossing	Recommended Treatment
NE Burton Rd.	Use existing signal
Royal Oak Dr.	Crosswalk

**Segment 1F: Kevanna Park to Lacamas Lake ~ 1.3 miles to City limits**

**Improvement Type**

New walking path

**Route**

Kevanna Park to NE Goodwin Rd. / Lacamas Lake Trail.

**Description**

This trail section will go along the north side of Burnt Bridge Creek from Kevanna Park to the existing Lacamas Heritage Trail trailhead at Goodwin Rd.



**Typical Treatment**

Walking Path

**Treatments and Improvements**

Add trailhead with parking in Kevanna Park. This project should be coordinated with the Kevanna Park Master Planning Process.



*Kevanna Park*

Crossing	Recommended Treatment
112 <sup>th</sup> Ave.	Signal
121 <sup>st</sup> Ave.	Crosswalk, with enhanced markings



*West of 121st Ave.*



*East of 121st Ave.*



## PROJECT 2: Columbia River/Evergreen Highway

The Columbia River / Evergreen Highway section extends from the River at I-5 eastward to SE 192nd Ave. Currently a wide sidewalk serves trail users on a direct route along Columbia Way from I-5 to Marine Park although the ultimate goal is to develop a shared use path in closer proximity to the riverfront. Approximately 10 new miles of trail are being proposed in order to construct a 12 mile long path that stretches along the river from I-5 to 192nd Ave. The numbering of segments in this section runs from west to east.



Figure III-3: Project 2, Columbia River / Evergreen Highway

**Segment 2A: Kaiser Shipyard**

~ 2.8 miles

**Improvement Type**

New shared-use path

**Route**

From Ryan's Point to existing trail to east

**Description**

This section consists of industrial properties between the waterfront and Columbia Way.

There is a wide sidewalk along Columbia Way on the northern portion of this segment which currently serves trail users; however, the long term goal is for the trail to be located along the river, connecting with Marine Park to the east and the existing riverfront trail to west.

**Typical Treatment**

Shared-use path, Waterside design

*Shipyard from the west*

**Segment 2B: Ryan's Point (Marine Park)**

~ 1.5 miles

**Improvement Type**

New shared-use path

**Route**

From the northwest portion of Marine Park to the east end of Columbia Way.

**Description**

This section includes a partial trail along the river in Marine Park, with plans to complete the trail along the river. The road into Marine Park proper will need to be moved, along with one property at the east end of Marine Park.

Existing portions of the trail are in very good condition with amenities such as benches, lighting, trashcans and restrooms.

**Typical Treatment**

Shared-use path: Waterside design



**Segment 2C: Tidewater Cove Jetty**

~.1 miles

**Improvement Type**

New shared-use path

**Route**

Path will extend outward from proposed waterfront trail along a jetty to viewing area of Columbia River.

**Description**

Short path extending out along jetty.

**Typical Treatment**

Waterside design



**Segment 2D: Lieser Point**

~ 1.6 miles

**Improvement Type**

New shared-use path

**Route**

From Wintler Park to Image Rd. along Lieser Point Dr.

**Description**

Currently, trail users leave Marine Park, travel briefly on Columbia Way and enter Wintler Park on the west. The existing trail in Wintler Park is in fair condition, with some pavement cracking. There are amenities such as benches, restrooms, and signage in Park. The Wintler Park trail ends at the beach on the east side of the Park.

The next section of trail along the River, east of Wintler Park, is proposed to be along a city-owned easement. This trail will be along a graded shelf adjacent to residences.

The trail will enter the Jane Weber Arboretum Property after Lieser Point and go north to Evergreen Highway near Image Rd. There will be a road crossing on Evergreen Highway and Image Rd.

**Typical Treatment**

Shared-use path: Waterside design



*East of Wintler Park*



*Stanger House at Jane Weber Arboretum*

**Segment 2E: Ellsworth (Evergreen Highway Trail)**

~ 1.4 miles

**Improvement Type**

New shared-use path

**Route**

From Image Rd. to Ellsworth along the Evergreen Highway.

**Description**

This path will provide a connection to the I-205 Bridge as well as a route to Biddle Nature Preserve in Columbia Springs Center.

**Typical Treatment**

Standard shared-use path



**Segment 2F: Columbia Springs (Evergreen Highway Trail) ~ 3.3 miles**

**Improvement Type**

New shared use path

**Route**

From I-205 to SE 192<sup>nd</sup> Ave along Evergreen Highway.

**Description**

The trail is proposed to continue along either the north or south side of Evergreen Hwy, similar to the previous section. Once this portion of trail is built, trail users will continue to travel east from the Biddle Nature Preserve and Columbia Springs Environmental Center, past SE 164<sup>th</sup> Ave. to 192<sup>nd</sup> Ave. At 169<sup>th</sup> Ave., trail users will be able to connect with the Fishers Landing Transit Center via a sidewalk/trail on the east side of 164<sup>th</sup> Ave.

This project needs further development, particularly in crossing under SR-14 and connecting 164<sup>th</sup> Ave. to the trail on Evergreen Hwy. The intersection of 164<sup>th</sup> Ave. and Evergreen Hwy. presents particular problems. Trail design should carefully evaluate the best option for this area.

**Spur**

An earthen walking trail spur runs from 143<sup>rd</sup> St. to 164<sup>th</sup> St. along the waterfront, with a viewpoint at 164<sup>th</sup> St.



*Biddle Preserve Trail*



*Fish Hatchery at Columbia Springs Environmental Center*



### PROJECT 3: Discovery Loop / Central City

This project includes the Discovery Historic Loop and other trail segments that are in the central city area of Vancouver. The recently completed Discovery Historic Loop offers many historic and scenic attractions along the 2.3-mile trail. The Loop begins on East Evergreen and winds through Fort Vancouver National Historic Site, Officer's Row, and downtown Vancouver, joining the Waterfront Renaissance Trail at Vancouver Landing. Sights along the way include Fort Vancouver, Pearson Air Museum, Providence Academy and Esther Short Park.. Although construction of the trail is complete, a number of trail amenities such as benches and signage are recommended to realize the full potential of the Loop. Additionally, a connection with the Amtrak station and a land bridge through Old Apple Tree Park are recommended to create a larger loop connecting this path with the Columbia River and central city areas. The numbering of segments in this section starts with the Discovery Loop and then runs from south to north beginning at I-5 and the Columbia River.



Figure III-4: Project 3, Discovery Loop / Central City

**Segment 3A: Discovery Historic Loop**

~ 4.8 miles

**Improvement Type**

Trail upgrades including addition of amenities such as signage and benches

**Route**

Evergreen Blvd. to E Reserve, to E 5<sup>th</sup> St. through Keiwit, under SR-14 to Central River Reach, to Old Apple Tree Park, to E 5<sup>th</sup> St.

**Description**

The Discovery Historic Loop Trail offers a diversity of cultural and historical experiences to walkers and bicyclists in Vancouver. This urban trail traverses through Downtown Vancouver, the Fort Vancouver National historic site, Officers Row national Historic District, and along the Columbia River waterfront. The Discovery Historic Loop also provides a transportation route for bicyclists and pedestrians traveling east of downtown.



*Pioneer Mother statue*



*Officers Row*



*Capt. Vancouver Plaza sign*



*Underpass at Old Apple Tree Park*



*Vancouver's Discovery Historic Loop*



*Public art at the waterfront*



*Evergreen Arboretum*

**Segment 3B: SR 14 Overpass- Land Bridge** **~0.8 miles**

**Improvement Type**

Develop Landbridge

**Route**

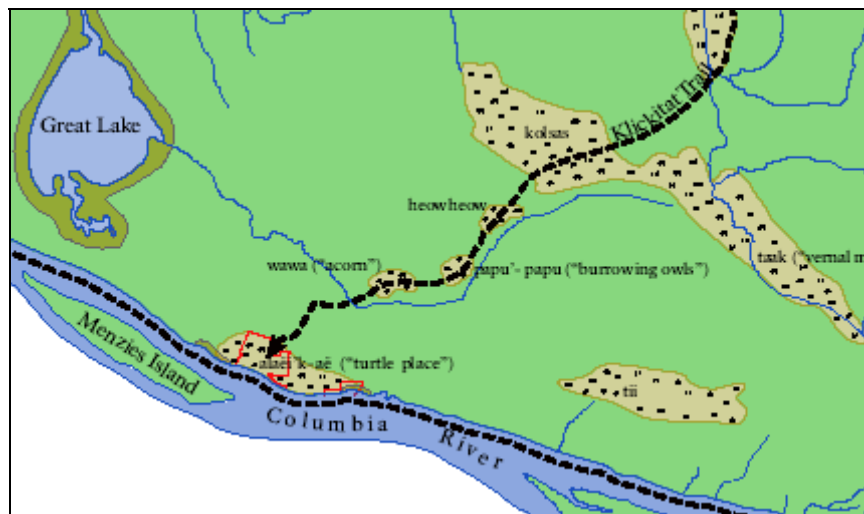
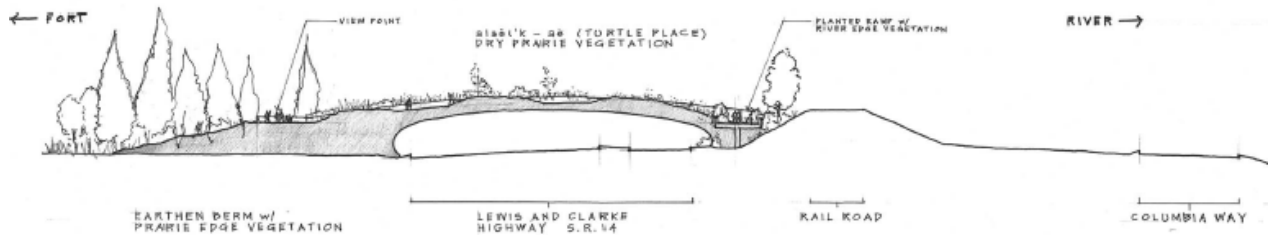
5<sup>th</sup> Street to Waterfront Park

**Description**

Proposed Landbridge to connect 5<sup>th</sup> Street to Waterfront Park through Apple Tree Park. The Landbridge reinstates the vital, historic connection between Fort Vancouver National Historic Reserve and the river edge, and establishes a gateway to the City of Vancouver.

**Typical Treatment**

Concept plan for Landbridge courtesy of Jones & Jones, Maya Lin Confluence Project/ Ft. Vancouver:



**Segment 3C: Amtrak**

~ 1.9 miles

**Improvement Type**

New shared-use path

**Route**

From I-5 along riverfront to Amtrak station continuing on to Mill Plain Extension.

**Description**

The long term goal for this section is to have a trail run from the west side of I-5 along the river to the Amtrak station. From the Amtrak station north to the Mill Plain Extension, a trail must be developed alongside the tracks, and a ramp added up the hill to Mill Plain. Extensive research and field work will be needed on this segment.

In the short term, a connection can be made along Columbia St. to W 8<sup>th</sup> St. and on to the Amtrak station.

**Typical Treatment**

Shared-use path: Roadside Trail and Rail-with-Trail



*Amtrak station*



*Rail alignment at Amtrak station*



## PROJECT 4: Vancouver Lake

Project 4 includes trail segments around the Vancouver Lake area. Much of the landscape in this area is very scenic, with many natural places for wildlife viewing and other recreational activities. The long term goal is to develop approximately 20 miles of shared use paths that encircle the area. The numbering sequence of the segments in this section starts at Lower River Road in the south and goes clockwise around the Lake.



Figure III-5: Project 4, Vancouver Lake

**Segment 4A: Lower River Rd.****~ 3.5 miles****Improvement Type**

New shared-use path and bike lanes

**Route**

From Fourth Plain Blvd. to Flushing Channel along Lower River Rd.

**Description**

This roadway carries many trucks traveling at high speeds. Currently the pavement on the wide shoulder is cracking and roadway is breaking off at the edges.

**Typical Treatment**

New shared-use path and bike lanes: Roadside Trail, as on Mill Plain Blvd.

**Treatments and Improvements**

The best trail option for safety and comfort in this section would be a trail separated from traffic along the road. A 12' widened paved path is recommended, in addition to paved shoulders.

**Connection**

Vancouver Lowlands Loop



*Lower River Road*

**Segment 4B: Lake River****~5.9 miles****Improvement Type**

New shared-use path

**Route**

From Vancouver Lake Trailhead to Ridgefield Wildlife Preserve.

A spur runs from north end of Lower River Rd. to the Ridgefield Wildlife Preserve.

**Description**

This trail section could follow NW Erwin O. Rieger Memorial Hwy. and cross over Lake River to connect with the Salmon Creek Greenway.

The Ridgefield spur segment could follow Lower River Road to the Ridgefield Wildlife Preserve.

**Typical Treatment**

Roadside Trail



**Segment 4C: Fruit Valley Road**

**~0.8 miles**

**Improvement Type**

New shared-use path

**Route**

From NW Whitney Rd. to Lakeshore Ave along Fruit Valley Rd.

**Description**

Currently there is no trail along this section. It is a fairly fast two-lane roadway without sidewalks. It is an important section because it connects the trails from the north, south and the east.

This on/along-road trail section is centered on the Stewart’s Glen trailhead. The 12’ wide trail should be located on the east side of the roadway. This will be a challenging project because of topographical constraints and the need to cross a railroad track just south of Stewart’s Glen.



Signs are needed along Fruit Valley directing trail users to the location of Stewart’s Glen trailhead.

**Typical Treatment**

Shared-use path: Roadside Trail

Crossing	Recommended Treatment
Fruit Valley at Stewarts Glen	Signal or crosswalk



*Fruit Valley Rd. at Stewart's Glen*

**Segment 4E: Lowlands Loop**

~ 2.3 miles

**Improvement Type**

New shared-use path

**Route**

From Lower River Rd. to Fruit Valley Rd. inside Vancouver Lake Lowlands

**Description**

This would be a trail separated from traffic inside the Vancouver Lake Lowlands Area. Parts of the trail will go through undeveloped areas. Sensitivity to wildlife habitat and other environmental issues will be important.



**Project 4 Spur: Lakeshore Road**

5.5 miles

**Improvement Type**

New bike lanes and wide sidewalk

**Route**

From 78<sup>th</sup> St north to Salmon Creek Greenway along Lakeshore Rd..

**Description**

There should be bike lanes along Lakeshore Rd. on both sides of the street.



**Project 4 Spur: La Frambois Road**

~ 1 mile

**Improvement Type**

New shared-use path

**Route**

From Fruit Valley Park. to the Vancouver Lake Lowlands.

**Description**

This trail section could be on-street or sidewalk along this short stretch of road. Beyond the road, the trail will provide access to a viewing point in Vancouver Lake Lowlands.



## PROJECT 5: Other Trails

Five significant recommended segments for the trail network do not fit in to any other project. They are:

- A. Powerline / NE 18<sup>th</sup> Street
- B. NE 192<sup>nd</sup> Avenue
- C. Blandford Road
- D. Ellen Davis Trail
- E. Firstenberg Community Center Trail Connection



Figure III-6: Project 5, Other Trails

**Segment 5A: Powerline / NE 18<sup>th</sup> Street**

~5.5 miles

**Improvement Type**

New shared-use path

**Route**

From Meadowbrook Park east to Goodwin Rd./Lacamas Lake along 18<sup>th</sup> Street Corridor and BPA right-of-way

**Description**

This excellent east-west corridor is currently a wide BPA right-of-way, with 18<sup>th</sup> St. built in certain parts and planned for completion in the next 10 years. As part of the 18<sup>th</sup> St. project, a trail is proposed.

**Typical Treatment**

Powerline Trail

**Connections**

Lacamas Lake Trail  
Burnt Bridge Creek Trail west of this segment



*Powerline along NE 18th St.*

Crossings	Recommended Treatment
NE 92 <sup>nd</sup> Ave	Crosswalk
NE 97 <sup>th</sup> Ave	Crosswalk
I-205	Existing over-crossing
NE 112 <sup>th</sup> Ave	Crosswalk / signal
NE 138 <sup>th</sup> Ave	Crosswalk / signal
NE 162 <sup>nd</sup> Ave	Crosswalk / signal
NE 172 <sup>nd</sup> Ave	Crosswalk / signal

**Segment 5B: NE 192<sup>nd</sup> Ave. ~ 3.5 miles**

**Improvement Type**

Develop bike lanes and new sidewalk

**Route**

From NE 18<sup>th</sup> St south to Evergreen Hwy. along 192<sup>nd</sup> Ave.

**Description**

Roadside path – wide sidewalk on east, bike lanes on road

**Typical Treatment**

Roadside Trail



**Segment 5C: Blandford ~ 1.5 miles**

**Improvement Type**

New shared-use path and bike lanes

**Route**

Connection from Marine Park to Burnt Bridge Creek Trail along Columbia House Blvd. to Blandford Dr. to Macarthur Blvd. to NE Devine.

**Description**

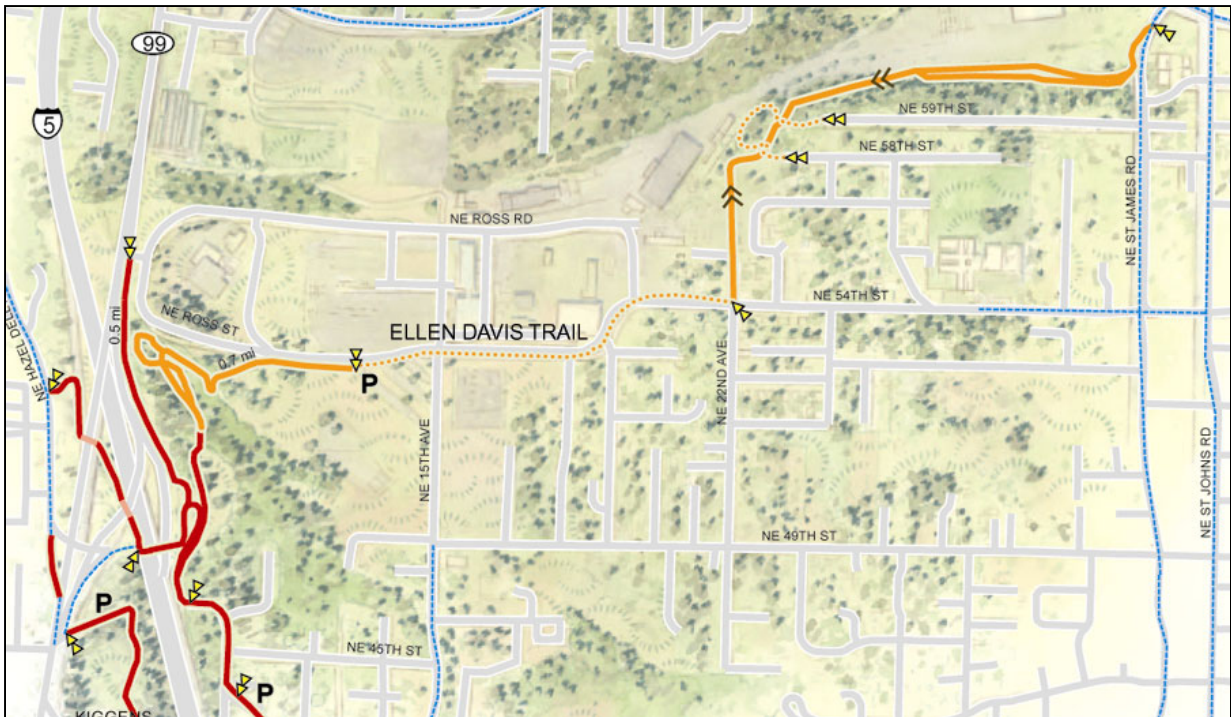
This proposed trail follows the contours of Blandford Rd. Its topographical constraints will be challenging, but the scenery is spectacular. Design options may include an earthen walking trail only (due to environmental constraints), a roadside path, or bike lanes on the road. Further study is recommended.

**Typical Treatments**

Earthen Trail, Roadside Path, and/or Bike Lanes



**Project 5D: Ellen Davis Trail** **~ 1.7 miles**



**Improvement Type**

Upgrades to existing trail

**Route**

North of Leverich Park.

**Description**

The Ellen Davis Trail is a walking trail just north of Leverich Park. Currently it is unpaved with loose gravel as its surface. To retain the trail's rustic feel and primary focus as a walking trail, a decomposed crushed granite or sandseal surface may be used.

If the trail is to receive federal funding for trail enhancements, it will need to be paved and meet ADA standards for slope of trail.

**Typical Treatment**

Walking Path



*Ellen Davis Trail*

**Project 5E: Firstenburg Community Center Trail Connection**

**Improvement Type**

New shared-use path

**Route**

Connect Firstenburg Community Center to Haagen Park and on to 18<sup>th</sup> Street Powerline Trail.

**Typical Treatment**

Standard shared use path



