

# Public Outreach

- Design Charette (25 participants)
- 2 Public Workshops (150 participants)
- 4 Neighborhood Group Meetings
- I-5 Dedication
- First Tuesday Presentation
- Special Interest Group Participation
- 2 Mailings (300+ each)
- 9 Stakeholder Interviews
- Media Coverage
  - ~ Oregonian
  - ~ Columbian
  - ~ CVTV
  - ~ All Neighborhood Newsletters
  - ~ Parks & Recreation Web Site



# Public Involvement Design Charette



# Public Involvement Design Charette



# Public Involvement Workshops



# Public Involvement Workshops



# Environmental Review and Permitting

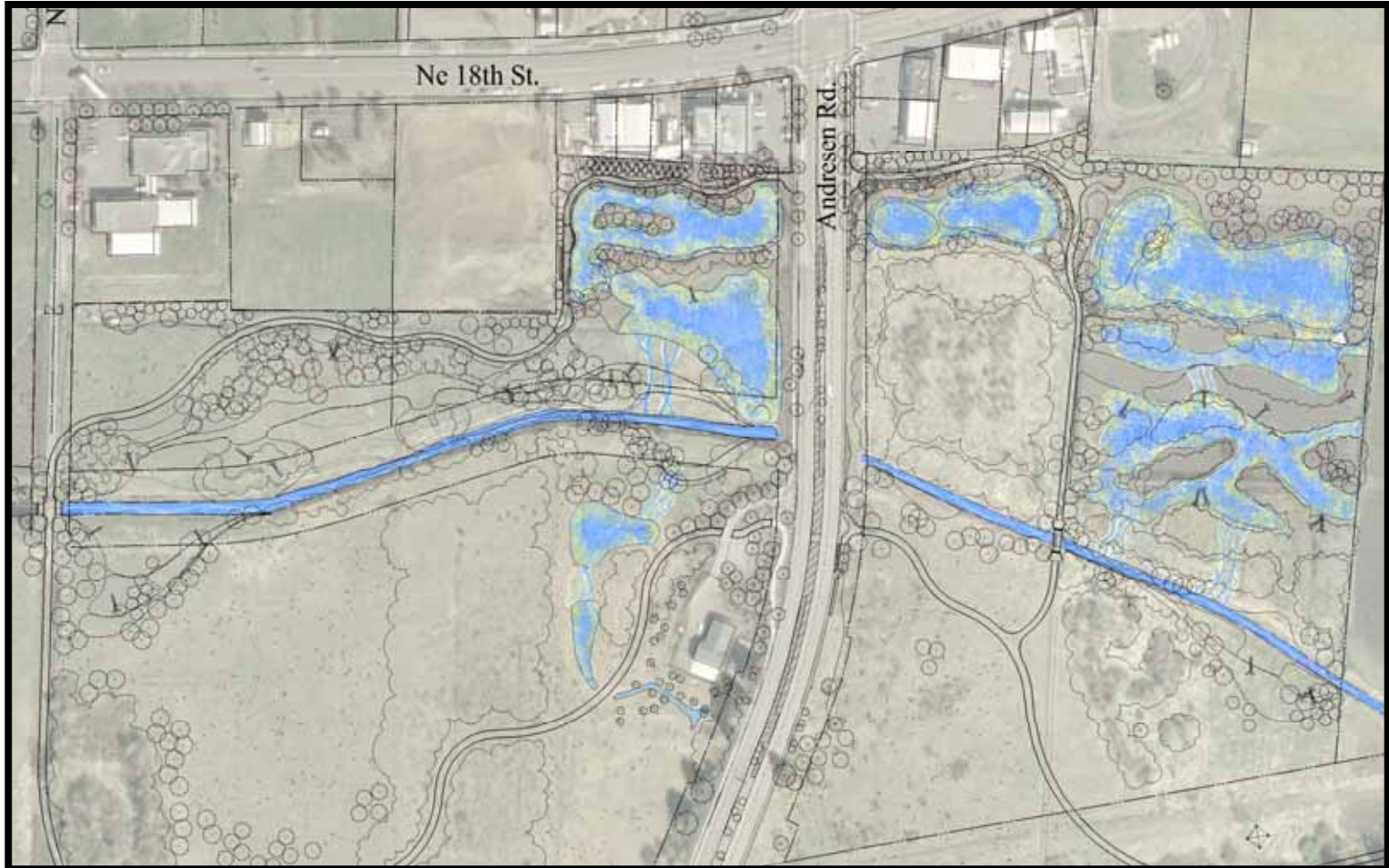
- Federal
  - U. S. Fish & Wildlife Service
  - National Marine Fisheries Service
  - U. S. Army Corps of Engineers
- State of Washington
  - Department of Ecology
  - Department of Fish & Wildlife
  - Office of Archaeology & Historic Preservation
- City of Vancouver
  - Shorelines
  - SEPA

# Water Quality

## New Improvements

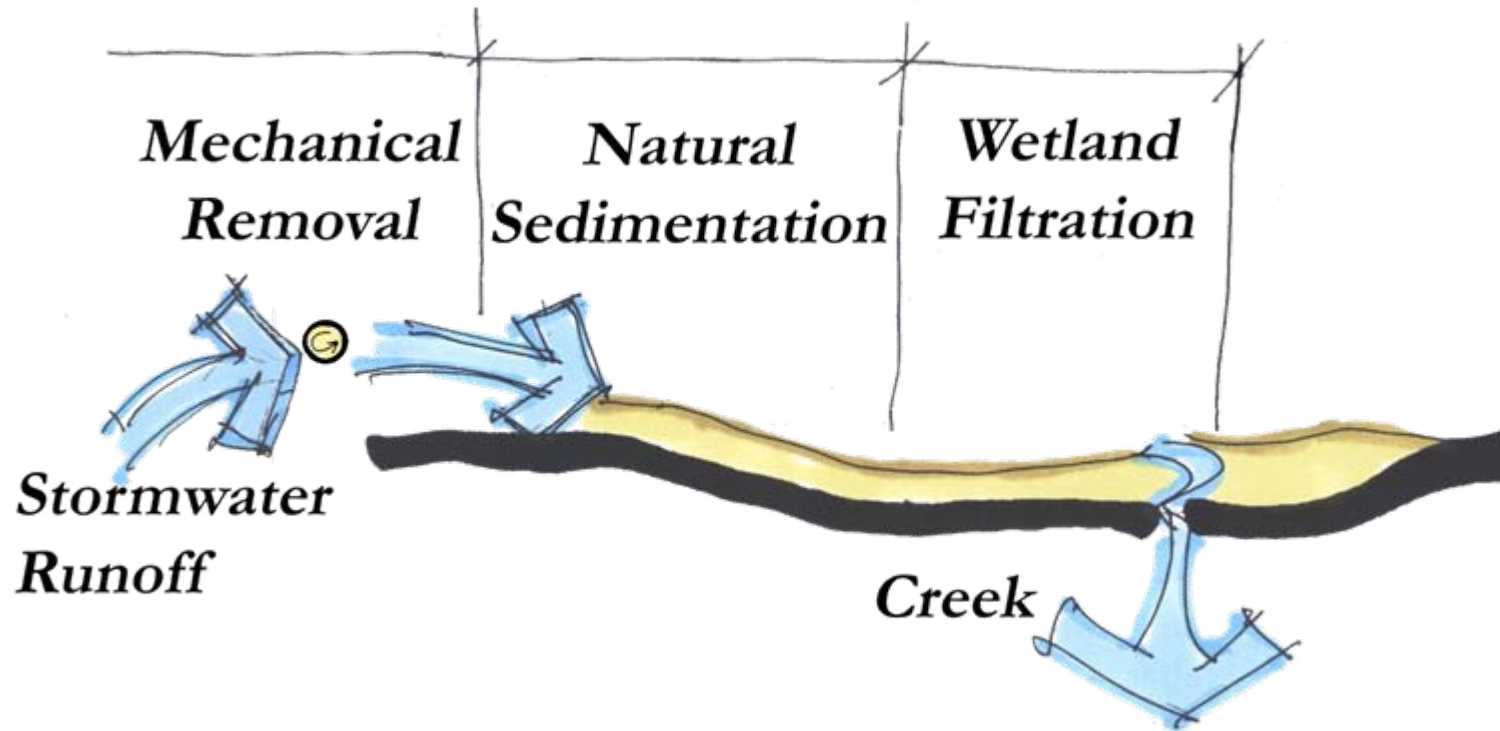
- Flood control
- Route stormwater runoff through cleansing process
- 3-stages of cleansing process
  - Mechanical removal
  - Natural sedimentation
  - Wetland filtration
- Pollutants & sediments are removed, releasing clean stormwater back into the creek.

# New Water Quality Ponds



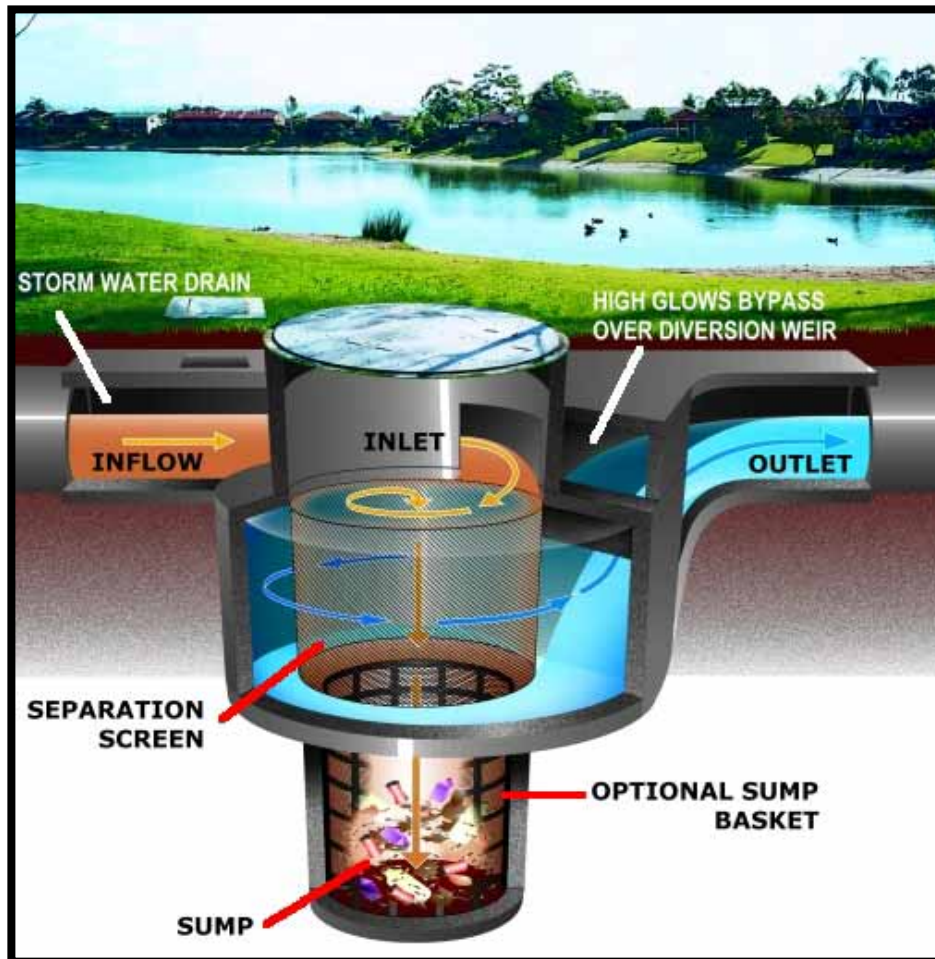
# Water Quality

## Surface Water Cleansing Process



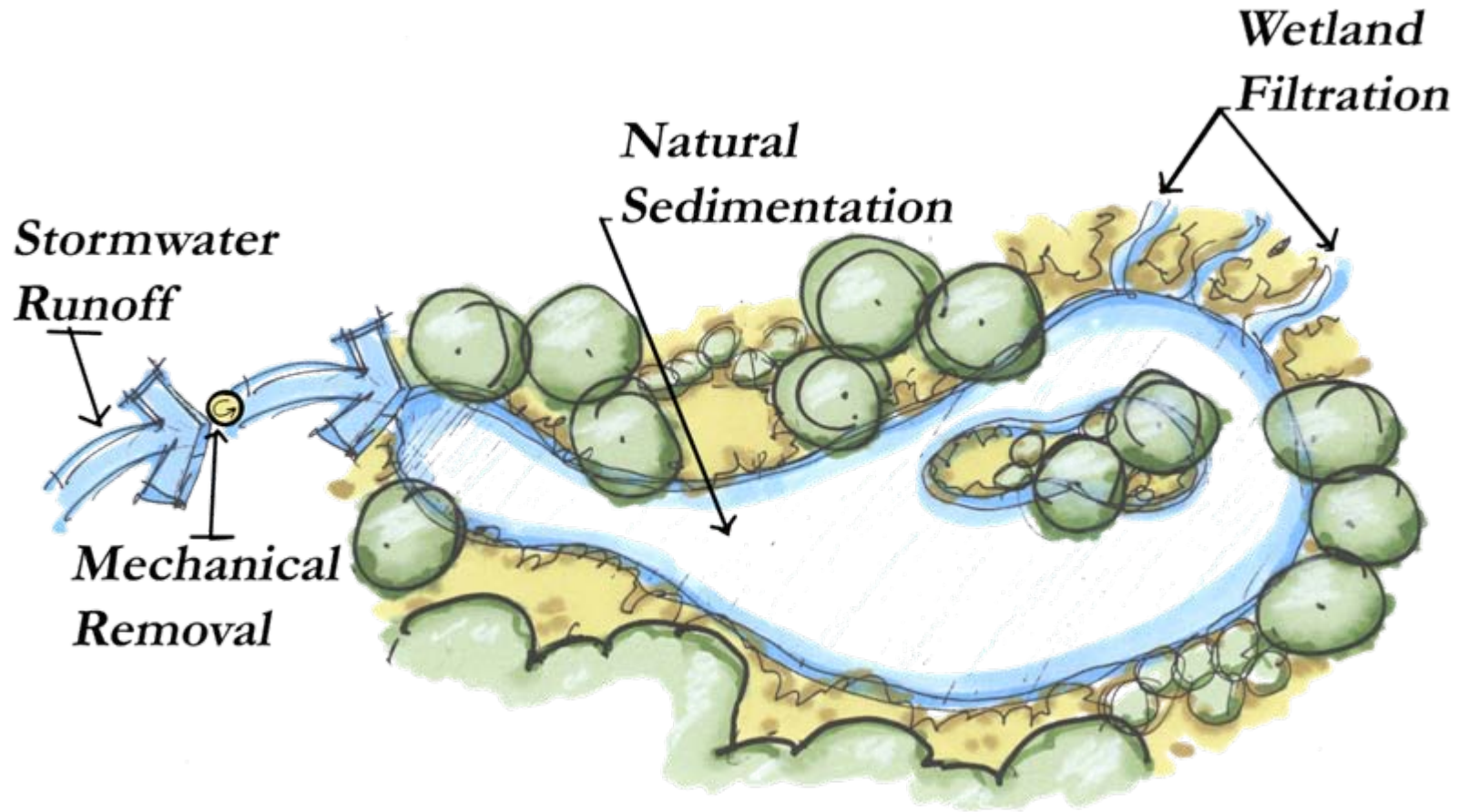
# Best Management Practice

## *Vortexing Manhole*



# Water Quality Pond

## Natural Sedimentation



# Andresen Pond

## Natural Sedimentation



# Andresen Pond

## Outfall to Wetland Filtration



# Andresen Pond Wetland Filtration to Creek

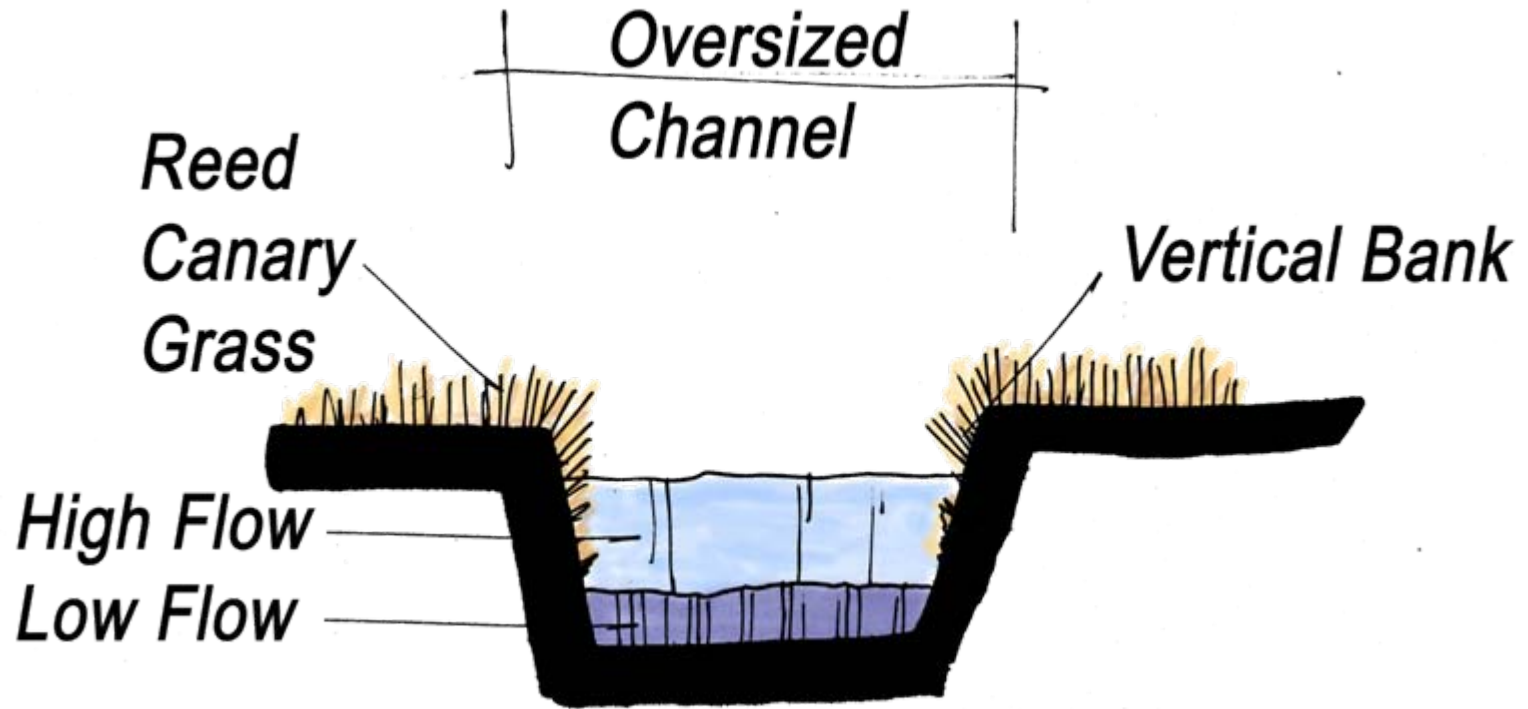


# Flood Plain New Wetlands

- Flood Water Control
- Erosion Control
- Increase & Diversify Shrub & Tree Canopy
- Enhance Fish & Wildlife Habitat

# Flood Plain

*Creek in Ditch*

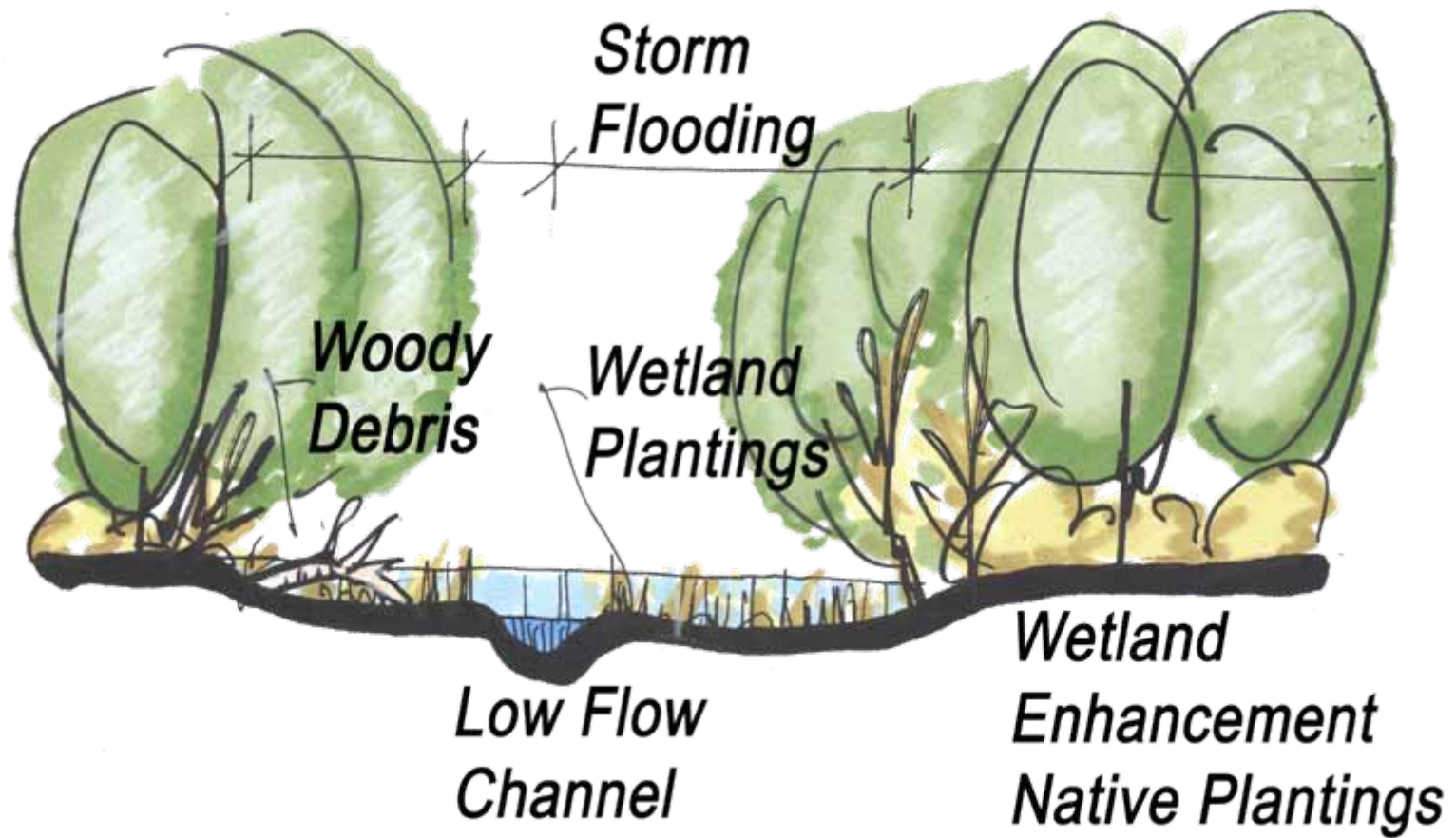


# Flood Plain Creek in Ditch

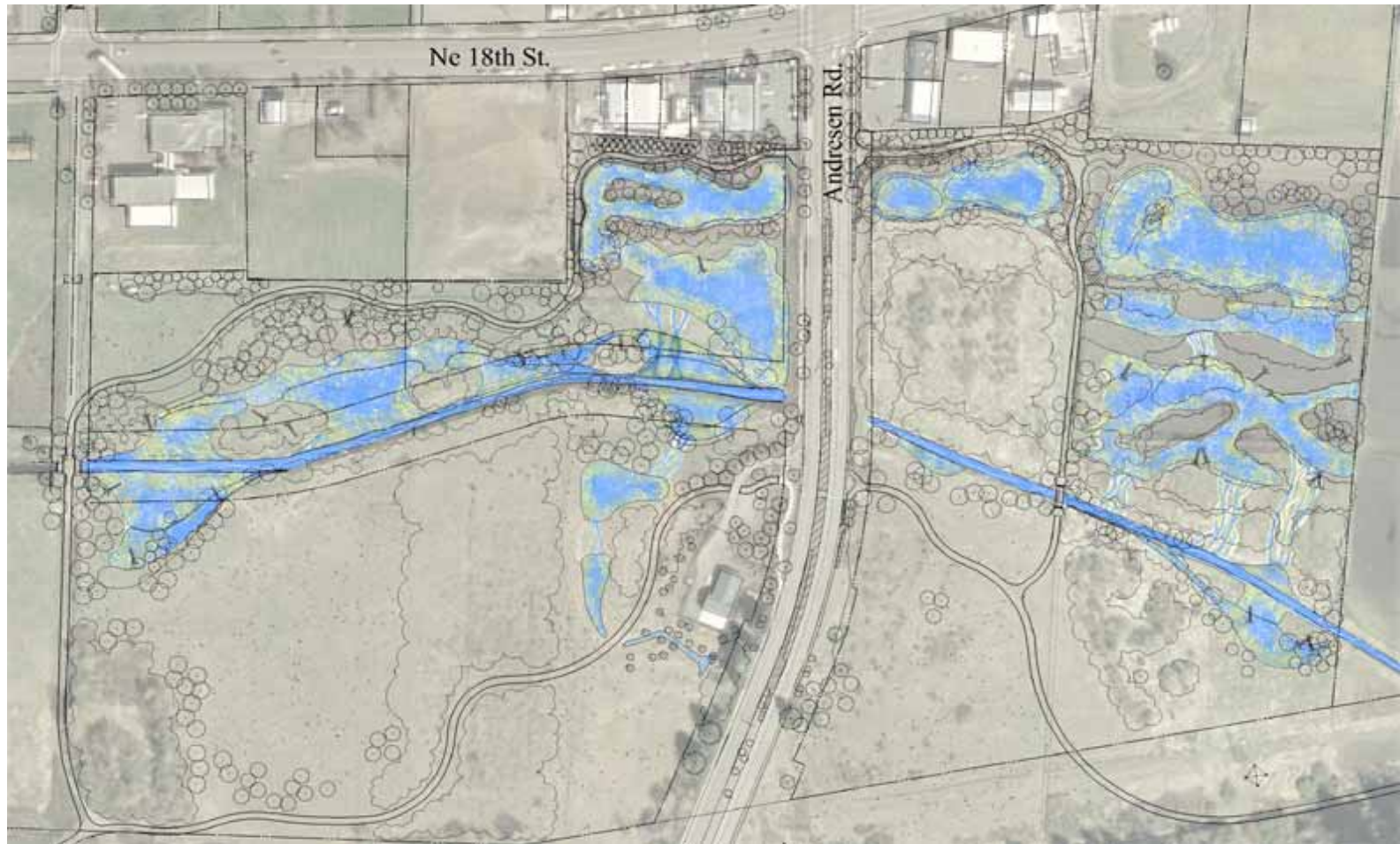


# Flood Plain

*Connect Creek to New Wetlands*



# Flood Plain Creek Connection to New Wetlands



# Native Habitat

- Reforestation with over 7,000 large caliper trees & 9,000 shrubs
- Increase & diversify shrub / tree canopy
- Cool water temperature
- Enhance habitat & nesting areas for fish & wildlife

# Native Habitat

## New Tree & Shrub Plantings



# Native Habitat

## New Tree & Shrub Plantings



# Greenway District Master Plan



# Burnt Bridge Creek Before



# Burnt Bridge Creek Goal

## Swimable and fishable

