



Vancouver Lake Watershed Partnership
Vancouver Lake Watershed Partnership

December 16, 2009

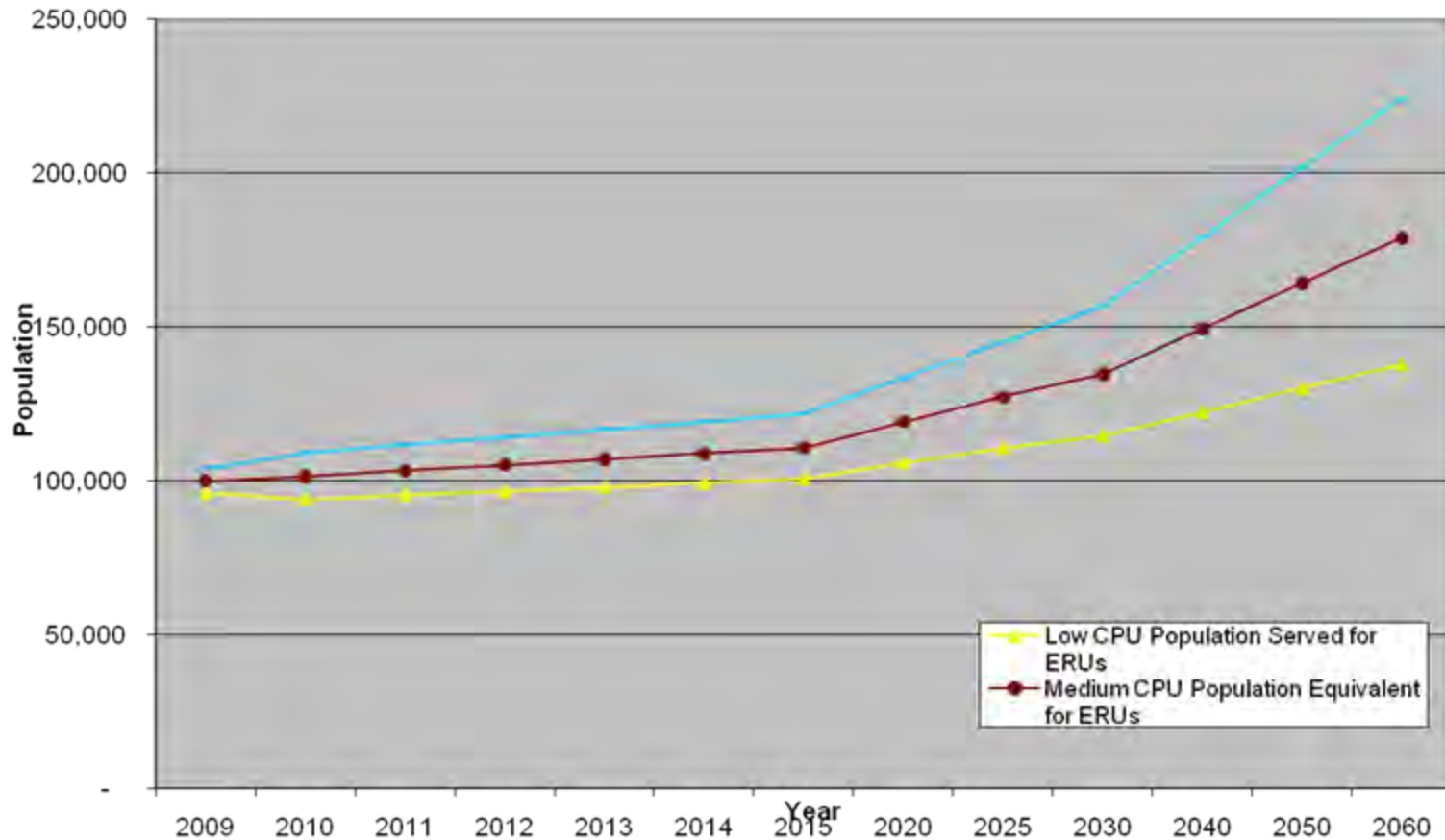
Clark Public Utilities
South Lake Wellfield

What is the need?

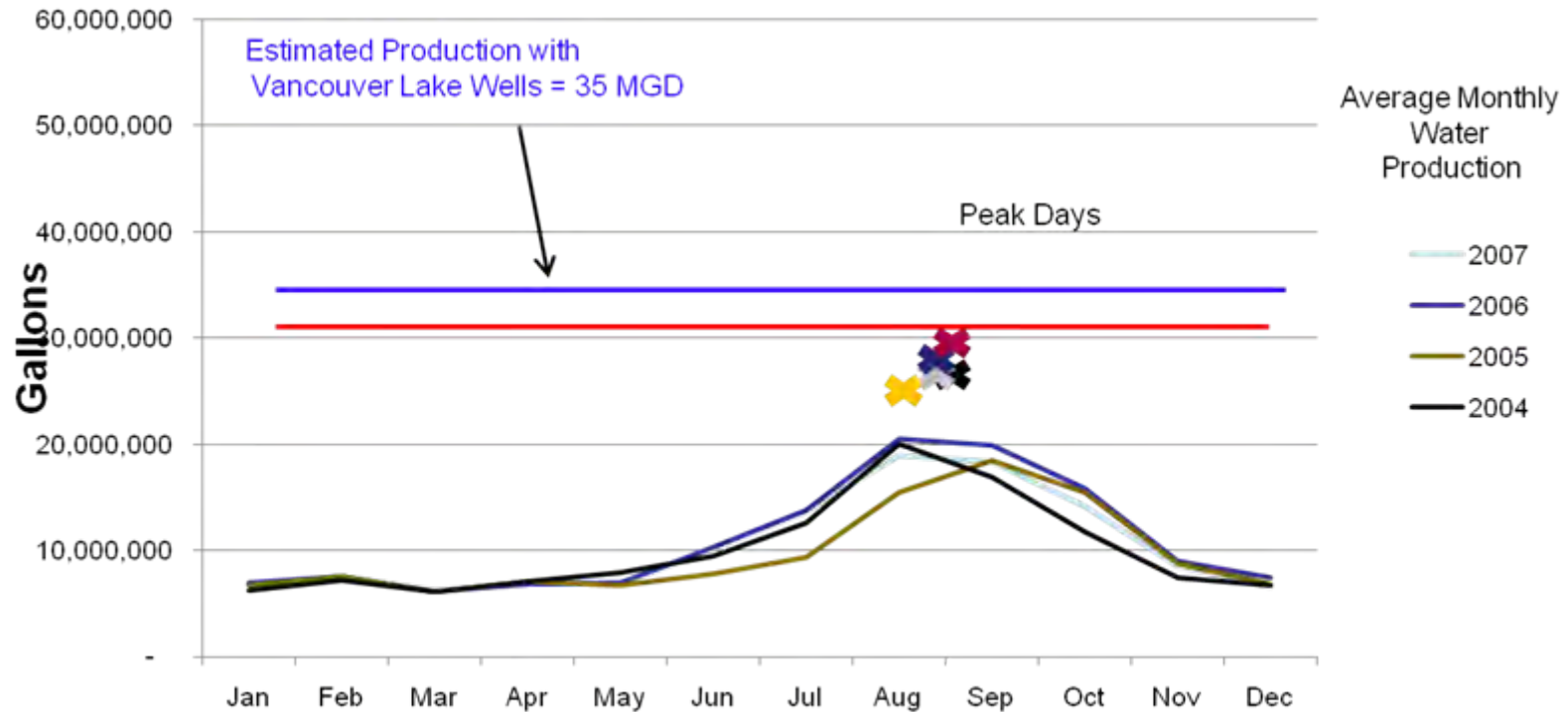
- Continued growing demand on the utility's water system.
- Minimize future wells in the upland reaches of restricted waterways, such as Salmon Creek and Lewis River.
- Rely upon current best practices to locate regional water supplies in tidally influenced zones of the Columbia River. (DOE, WDFW, WRIA)

Population Growth Projections

CPU Population Projections based on Clark County 2007 GMA Adopted Projections



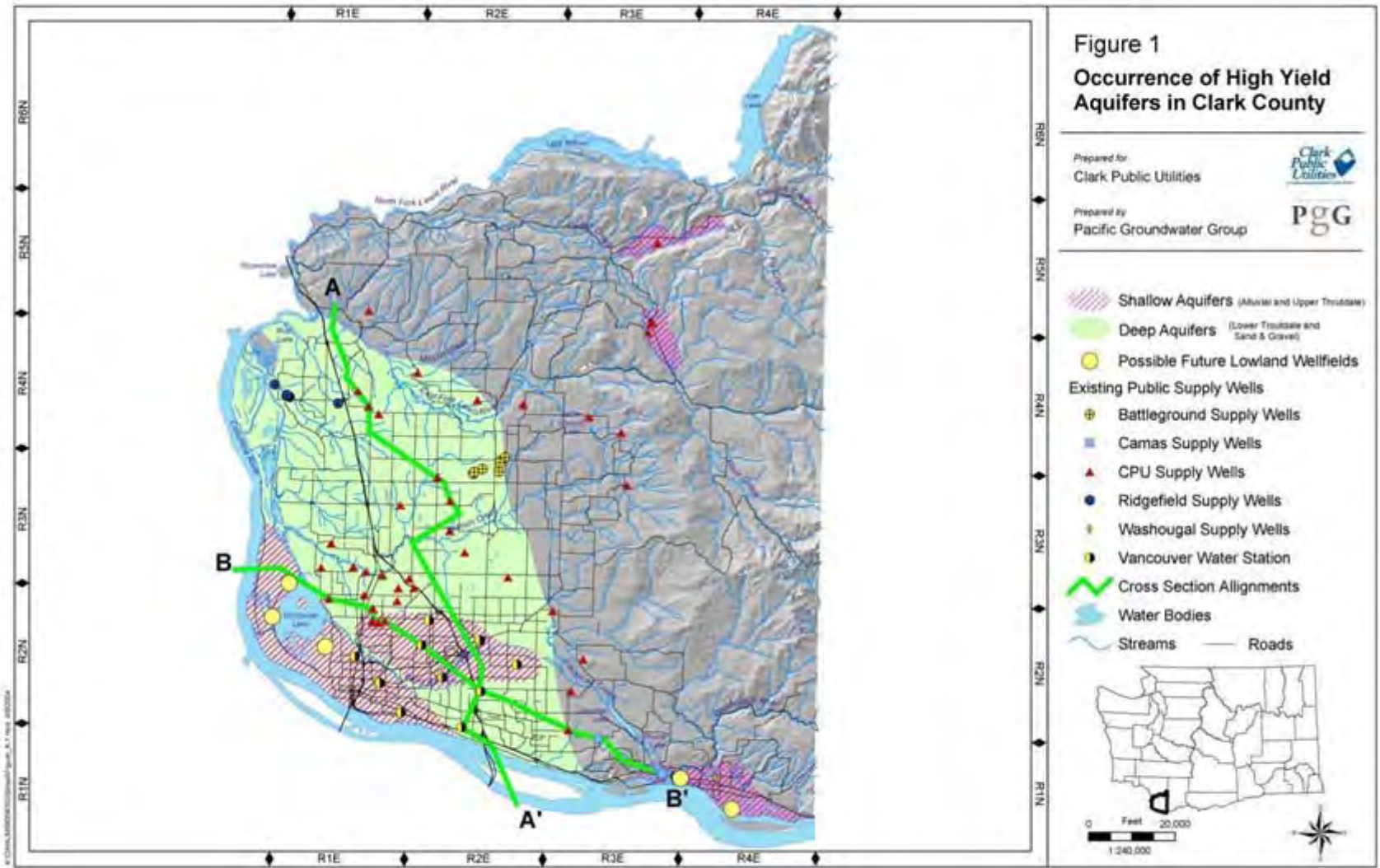
Current Demand



Max Daily Demand

2009 - 29.8 MGD
2008 - 25.3 MGD
2007 - 29.0 MGD
2006 - 27.7 MGD
2005 - 24.4 MGD
2004 - 26.0 MGD

Why Vancouver Lake?



WDFW Wetland Restoration Site



Firestone Property



Fruit Valley Rd.

La Frambois Rd.

